



7/8" BORE BRASS HEAVY DUTY CYLINDER

Consult factory for hydraulic applications

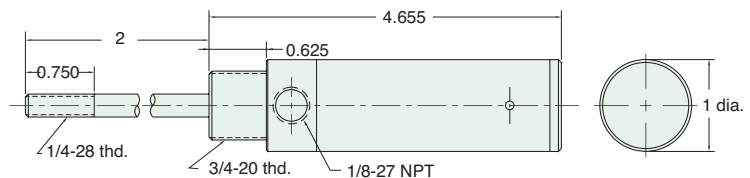
7SS-AR-1

Mount: Stud

Available Stroke Lengths: 1"

Type: Single Acting
Spring Extended

Add **-N** to the end of the part number for a non-threaded rod



Nut included, but not shown on drawing

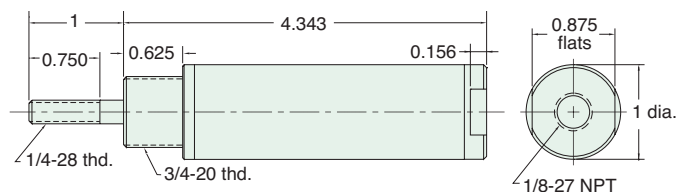
7SS-1

Mount: Stud

Available Stroke Lengths: 1"

Type: Single Acting
Spring Return

Add **-N** to the end of the part number for a non-threaded rod



Nut included, but not shown on drawing

7SD-□

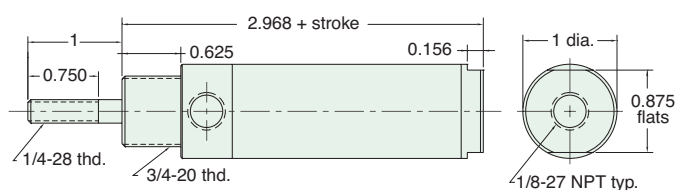
Mount: Stud

Available Stroke Lengths: 1", 2", 3", 5", 7", 9"

Type: Double Acting

To order: Add stroke length
to the end of the part number

Add **-N** to the end of the part number for a non-threaded rod



Nut included, but not shown on drawing

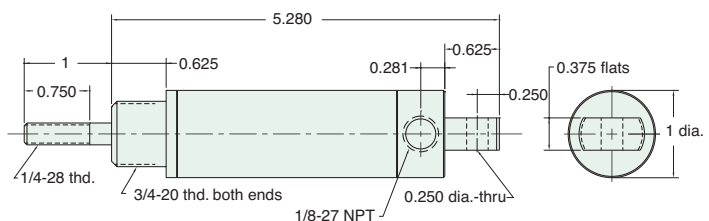
7S-1

Mount: Universal

Available Stroke Lengths: 1"

Type: Single Acting
Spring Return

Add **-N** to the end of the part number for a non-threaded rod



Nuts included, but not shown on drawing

7/8" BORE BRASS HEAVY DUTY CYLINDER



Consult factory for hydraulic applications

Note: Maximum recommended hydraulic working pressure for heavy duty cylinders is 1,000 psig.

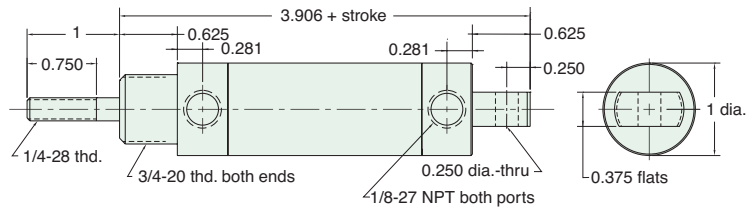
7D-

Mount: Universal **Available Stroke Lengths:** 1", 2", 3", 5", 7", 9"

Type: Double Acting

To order: Add stroke length to the end of the part number

Add **-N** to the end of the part number for a non-threaded rod



Nut included, but not shown on drawing

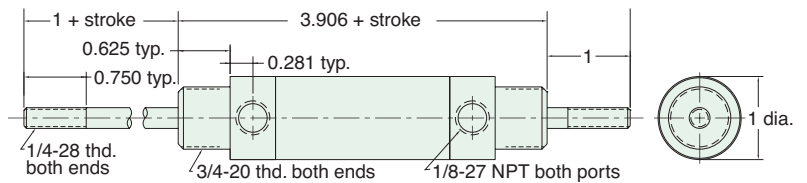
7DD-

Mount: Universal **Available Stroke Lengths:** 1", 2", 3", 5", 7", 9"

Type: Double Acting
Double Rod

To order: Add stroke length to the end of the part number

Add **-N** to the end of the part number for a non-threaded rod



Nut included, but not shown on drawing

Did you know...

Leonard Clippard made the prototype cylinder piston seals by punching leather disks from his kids old shoe tongues.

