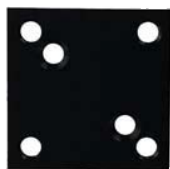


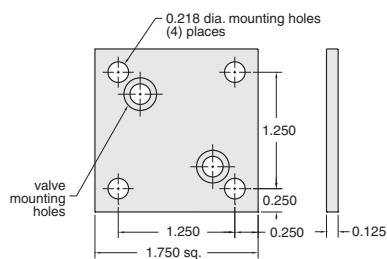


VALVE MOUNTING BRACKETS & ACCESSORIES

Flat Bracket



Flat bracket designed to mount 2010, 2011-1, 2012 and 2013 valves



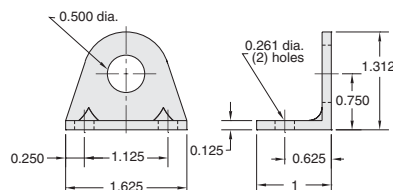
Construction: Black anodized finish, two mounting screws furnished.

Part No.	Description
2010-050	Flat Bracket

Mounting Bracket, 90°



90° angle, heavy duty Mounting Bracket for Clippard miniature valves



Mounting: 1/2" dia. hole for valve; two 0.261" dia. holes for attaching bracket

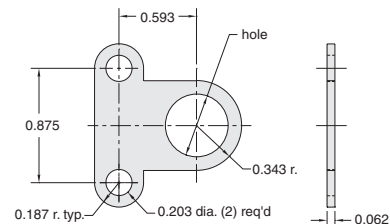
Construction: Stamped from 1/8" thick steel zinc plated

Part No.	Description
15018-2	Mounting Bracket, 90°

Flat Metal Bracket



Flat metal Bracket, for mounting Clippard miniature valves



Mounting: two 31/64" dia. mounting hole for valve; two 13/64" dia. mounting holes for attaching bracket

Construction: Stamped from 1/16" thick steel, zinc plated

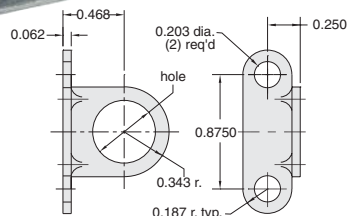
Part No.	Description
11917-1	Metal Bracket, 0.484 Hole
11917-2	Metal Bracket, 0.328 Hole

See Page 333 for a complete offering of In-Line Manifolds

Foot Mounting Bracket



90° angle, Foot Metal Mounting Bracket for Clippard miniature valves



Mounting: 31/64" dia. mounting hole for valve; two 13/64" dia. mounting holes for attaching bracket

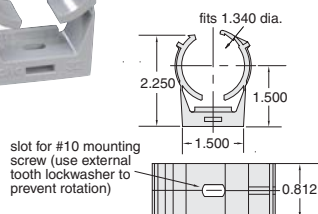
Construction: Stamped from 1/16" thick steel, zinc plated

Part No.	Description
11918-1	Mounting Bracket, 0.484 Hole
11918-2	Mounting Bracket, 0.328 Hole

Bracket for Action Relays



Mounting bracket for 3200-A snap action relays.

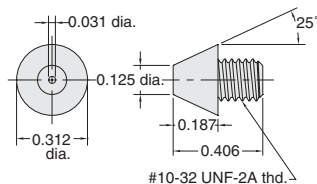


Part No.	Description
3200-006	Snap Action Relay Bracket

Rubber Nozzles



#10-32 rubber nozzles for replacement 2011-1 limit valves. #10-32 thread, five to a package

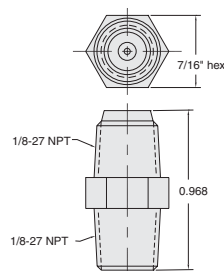


Part No.	Description
2011-012	Rubber Nozzles

1/8" NPT Filter



1/8" NPT hex nipple with 40 micron filter / strainer, can be used as a muffler



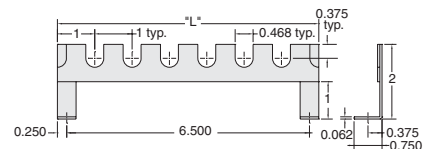
Part No.	Description
9002-01	1/8" NPT Filter

Slotted Mounting Bracket



Quick mounting, slotted drop-in type metal

Mounting Bracket for Clippard miniature valves, regulators, controls, cylinders and switches. Open tops make them ideal for quick, easy assembly of compact pneumatic logic control systems inside small spaces.



Mounting: 31/64" wide slots, with bottom radius. Mounted legs have 0.119" dia. mounting holes in feet

Construction: Machined from 16 gauge steel; spot welded legs; ENP.

Piping Path: 1" high open area below bracket horizontal member provides space for tubing or piping paths

Part #	# of Slots	"L"
MB-4	4	5"
MB-6	6	7"
MB-8	8	9"
MB-10	10	11"