

# STANDARD PNEUMATIC CIRCUIT BOARDS

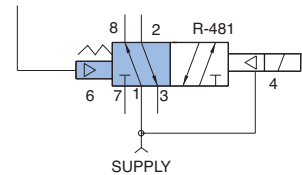
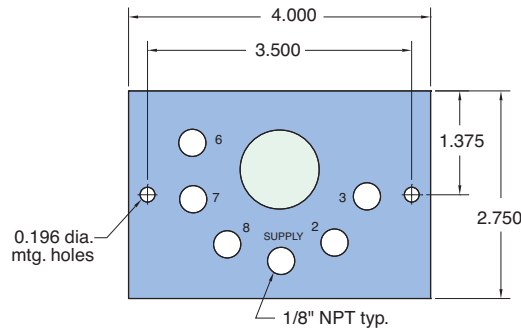


## CM-07

Circuit Board for R-471/472/481/482 with 1/8" NPT Ports

**Size:** 4" x 2 3/4" x 5/8" thick - 1 module

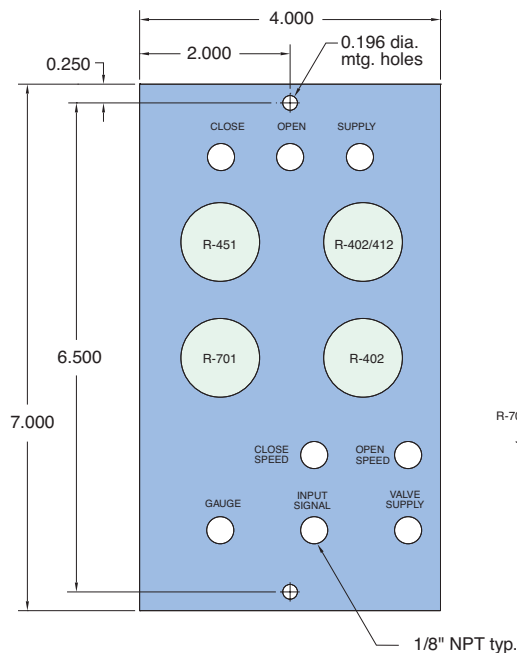
**Use:** Port #4, the supply to the pilot valve, is connected to the main supply port #1. Provides 1/8" NPT ports in the top of the circuit board.



## CM-08

Circuit Board for Binary Clamp Control with Adjustable Clamp Pressure

**Size:** 4" x 7" x 1" thick - 4 modules plus controls and fittings  
Just PUSH for "On"  
Just PUSH for "Off"



The Clippard CM-08 circuit board and the control valves that mount on it form a single push button pneumatic "OPEN/CLOSE". Binary clamp control with pressure and speed controls. The components are sold separately and can be assembled in a few minutes by the user. The use of this CM-08 package offers special user benefits: saves time; reduces cost and labor of piping; automates product tasks with easy to apply unit; binary push button operation; speed control built-in; pressure regulation included; may be operated remotely; equipped with "Auto-Reset" feature.

