

hose \`hōz \ n : a flexible tube for conveying gases or fluids

tubing \`t(y)u-bing \ n : a stiff material in the form of a tube used for conveying gases or fluids





## Do you use a garden tube?

The answer to the question of whether to call it a tube or a hose rests on a fine line, one many people have gotten tangled up in. In both definitions it clearly states that a tube and a hose are used for conveying fluids, yet sometimes one word seems to fit the situation (and the application) better than the other. So remember...

*It's a hose when it's flexible  
and a tube when it's not.*

Clippard offers a variety of miniature hose and tubing from copper and nylon tubing to flexible urethane, vinyl and Buna-N hose. The chart below lists these products and their available colors and lengths.



	-		-		-	
<b>Hose or Tubing Type</b>						<b>Available Lengths</b> <b>050</b> - 50' Roll <b>500</b> - 500' Spool
<b>NYT1</b> - Single Nylon Tubing						
<b>VYH1</b> - Single Vinyl Hose						
<b>VYH2</b> - Dual Vinyl Hose						
<b>URH1</b> - Single 85 Duro. Polyurethane Hose		<b>Size: O.D. x I.D.</b>		<b>Colors: Solid</b>		<b>Translucent</b>
<b>URH2</b> - Dual 85 Duro. Polyurethane Hose		<b>0402</b> - 1/8" x 1/16"		<b>BLS</b> - Blue		<b>BLT</b> - Blue
<b>URH8</b> - Ribbon 85 Duro. Polyurethane Hose		<b>0403</b> - 1/8" x 3/32"		<b>BKS</b> - Black		<b>CLT</b> - Clear
<b>URT1</b> - Single 95 Duro. Polyurethane Tubing		<b>0503</b> - 5/32" x 3/32"		<b>BRS</b> - Brown		<b>GNT</b> - Green
<b>PET1</b> - Single Polyethylene Tubing		<b>0610</b> - 1/2" x 0.320"		<b>GNS</b> - Green		<b>PUT</b> - Purple
		<b>0804</b> - 1/4" x 1/8"		<b>GYS</b> - Gray		<b>ORT</b> - Orange
		<b>0805</b> - 1/4" x 0.160"		<b>NAS</b> - Natural		<b>RDT</b> - Red
		<b>1208</b> - 3/8" x 1/4"		<b>ORS</b> - Orange		<b>YLT</b> - Yellow
		<b>Metric Sizes</b>		<b>RDS</b> - Red		<b>02T</b> - BLT/GNT/GYS/ORT/ PUT/RDT/WHS/YLT (ribbon only)
		<b>0604M</b> - 6 mm x 4 mm		<b>WHS</b> - White		
		<b>0805M</b> - 8 mm x 4 mm		<b>YLS</b> - Yellow		
				<b>01S</b> - Gray/Black (dual only)		

This chart is to be used as an explanation of our ordering system. See individual listings

**Available Lengths**  
050 - 50' Roll  
500 - 500' Spool

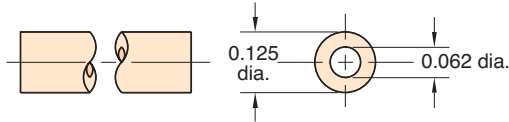
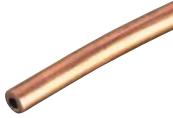
This chart is to be used as an explanation of our ordering system. See individual listings following this page for sizes and colors available.



# CLIPPARD HOSE & TUBING

## 3811-1-RL

1/8" O.D. Copper Tubing



**Material:** High pressure copper

**Working Pressures:** to 2,500 psig

**Static Burst Pressure:** over 10,000 psig

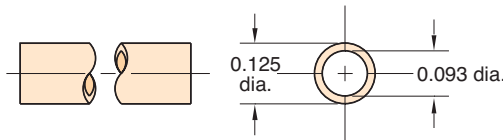
**Lengths Available:** 50'

**Bend Radius:** 3/8"

**Use With:** Ferrule tubing connectors: 3810-1, 3810-2, 11923

## NYT1-0403-CLT-□

3/32" I.D. Nylon Tubing



**Material:** Semi-flexible nylon tubing

**Color:** Clear / Translucent

**Working Range:** to 250 psig

**Static Burst Pressure:** Approx. 1,000 psig

**Use With:** Ferrule tubing connectors: 11923, 3810-1, 3810-2

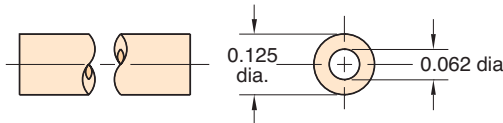
**Forming:** May be formed into sharp corners with heat

**Lengths Available:** 50' and 500'

**Bend Radius:** 3/8"

## VYH1-0402-CLT-□

1/16" I.D. 80A Vinyl Hose



**Note:**  
Consult factory for custom colors

**Type:** Flexible, durable vinyl plastic hose

**Working Range:** 0 to 105 psig at 70°F maximum 60 psig at 80°F or above (max. temp. 100°F)

**Use With:** Hose fittings: 11752-2 and clamp 5000-4

**Bend Radius:** 3x hose dia.

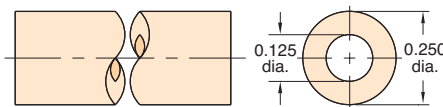
**Color:** Translucent: Clear

**Lengths Available:** 50' and 500'

**Bend Radius:** 3/8"

## VYH1-0804-CLT-□

1/8" I.D. 80A Vinyl Hose



**Note:**  
Consult factory for custom colors

**Working Range:** 0 to 105 psig at 70°F maximum 60 psig at 80°F or above (max. temp. 100°F)

**Use With:** Hose fittings: 11752-1, 11752-3 and 11924  
Hose clamps: 5000-2

**Bend Radius:** 3x hose dia.

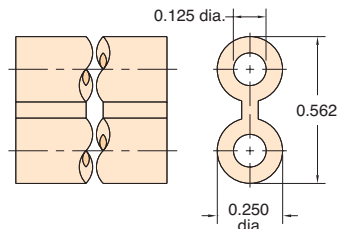
**Color:** Translucent: Clear

**Lengths Available:** 50' and 500'

**Bend Radius:** 1/2"

## VYH2-0804-GYS-□

1/8" I.D. Twin Vinyl Hose



**Type:** Flexible, durable vinyl plastic hose, but two hoses molded together, one side has rib entire length for identification

**Color:** Solid: Gray/Gray

**Use Clamp:** 5000-1

**Working Range:** 0 to 150 psig at 70°F maximum 60 psig at 80°F or above (max. temp. 100°F)

**Use:** Ideal for feeding supply in on one line and out on the other, reduces labor; makes neat assembly; may be parted with any sharp cutting edge

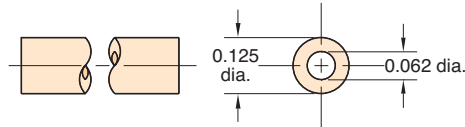
**Lengths Available:** 50' and 500'

**Bend Radius:** 1/2"

## URH1-0402-□-□



1/16" I.D. 85A Polyurethane Hose



**Working Range:** 0 to 105 psig at 100°F Maximum 120°F

**Static Burst Pressure:** Over 500 psig at 70°F

**Color:** Solid: Black, brown, white, gray, orange  
Translucent: Clear, blue, green, red, yellow

**Lengths Available:** 50' and 500'

**Bend Radius:** 3/16"

**Note:** In normal application hose clamps are not required with hose when used with Clippard hose barb fittings

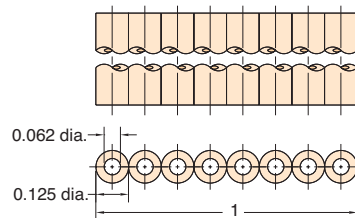
**Note:**

Specify color on order, and use full product number (including code letters for color) as shown in Price List. If no color is specified, clear will be furnished.

## URH8-0402-02T-050



1/16" I.D. 85A Polyurethane Ribbon Hose



**Type:** Flexible, durable urethane hose

**Working Range:** 0 to 105 psig at 100°F maximum 120°F

**Static Burst Pressure:** Over 500 psig at 70°F

**Color:** Solid: Gray, white  
Translucent: Blue, green, orange, purple, red, yellow

**Lengths Available:** 50'

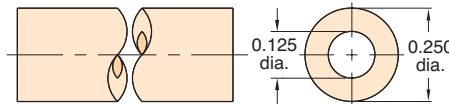
**Bend Radius:** 3/16"

**Note:** In normal application, hose clamps are not required with hose when used with Clippard hose barb fittings

## URH1-0804-□-□



1/8" I.D. 85A Polyurethane Hose



**Working Range:** 0 to 105 psig at 100°F Maximum 120°F

**Static Burst Pressure:** Approximately 425 psig at 70°F

**Color:** Solid: Black, brown, white, gray, orange  
Translucent: Clear, blue, green, red, yellow

**Lengths Available:** 50' and 500'

**Bend Radius:** 3/8"

**Note:** In normal application hose clamps are not required with hose when used with Clippard hose barb fittings

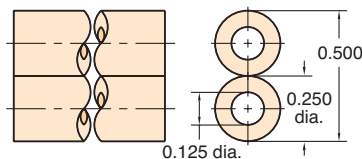
**Note:**

Specify color on order, and use full product number (including code letters for color) as shown in Price List. If no color is specified, clear will be furnished.

## URH2-0804-01S-□



Twin 1/8" I.D. 85A Polyurethane Hose



**Working Range:** 0 to 105 psig at 100°F

**Static Burst Pressure:** Approximately 425 psig at 70°F

**Color:** Solid: Gray and black combination

**Lengths Available:** 50' and 500'

**Bend Radius:** 3/8"

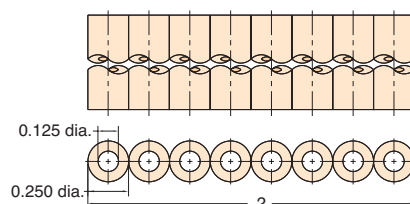
**Use:** Ideal for feeding supply in on one line and out on the other; reduces labor; makes neat assembly; may be parted with any sharp cutting edge

**Note:** In normal application, hose clamps are not required with URH2-0804-01S hose when used with Clippard hose barb fittings

## URH8-0804-02T-050



1/8" I.D. 85A Polyurethane Ribbon Hose



**Type:** Flexible, durable urethane hose

**Working Range:** 0 to 105 psig at 100°F maximum 120°F

**Static Burst Pressure:** Over 500 psig at 70°F

**Color:** Solid: Gray, white  
Translucent: Blue, green, orange, purple, red, yellow

**Lengths Available:** 50'

**Bend Radius:** 3/8"

**Note:** In normal application, hose clamps are not required with hose when used with Clippard hose barb fittings



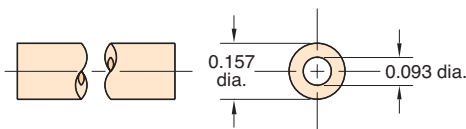
## CLIPPARD HOSE & TUBING

### URT1-0503-□-□



#### 5/32" O.D. 95A Polyurethane Tubing

Flexible, durable ether based tubing



**Working Range:** 0 to 105 psig at 100°F Maximum 120°F

**Static Burst Pressure:** Over 500 psig at 70°F

**Color:** Solid: Black, gray, orange, red, white  
Translucent: Blue, clear, green, red, yellow

**Lengths Available:** 50' and 500'

**Bend Radius:** 3/8"

**Note:** Designed for use with push-in fittings.

**Note:**

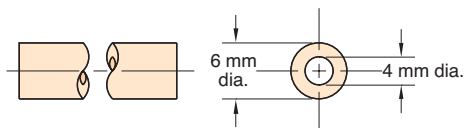
Specify color on order, and use full product number (including code letters for color) as shown in Price List. If no color is specified, clear will be furnished.

### URT1-0604M-□-□



#### 6 mm O.D. 95A Polyurethane Tubing

Flexible, durable ether based tubing



**Working Range:** 0 to 105 psig at 100°F Maximum 120°F

**Static Burst Pressure:** Over 450 psig at 70°F

**Color:** Solid: Black  
Translucent: Blue, clear, green, red

**Lengths Available:** 50' and 500'

**Bend Radius:** 1/2"

**Note:** Designed for use with push-in fittings.

**Note:**

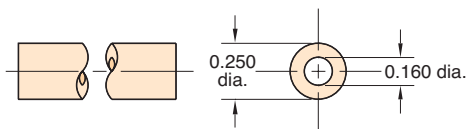
Specify color on order, and use full product number (including code letters for color) as shown in Price List. If no color is specified, clear will be furnished.

### URT1-0805-□-□



#### 1/4" O.D. 95A Polyurethane Tubing

Flexible, durable ether based tubing



**Working Range:** 0 to 105 psig at 100°F Maximum 120°F

**Static Burst Pressure:** Over 450 psig at 70°F

**Color:** Solid: Black, gray, orange, red, white  
Translucent: Blue, clear, green, red, yellow

**Lengths Available:** 50' and 500'

**Bend Radius:** 1/2"

**Note:** Designed for use with push-in fittings.

**Note:**

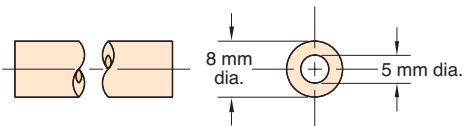
Specify color on order, and use full product number (including code letters for color) as shown in Price List. If no color is specified, clear will be furnished.

### URT1-0805M-CLT-□



#### 8 mm O.D. 95A Polyurethane Tubing

Flexible, durable ether based tubing



**Working Range:** 0 to 105 psig at 100°F Maximum 120°F

**Static Burst Pressure:** Over 465 psig at 75°F

**Color:** Clear

**Lengths Available:** 50' and 500'

**Bend Radius:** 3/4"

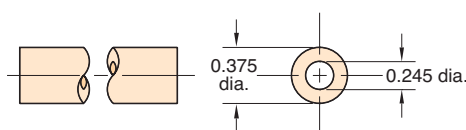
**Note:** Designed for use with push-in fittings.

### URT1-1208-□-□



#### 3/8" O.D. 95A Polyurethane Tubing

Flexible, durable ether based tubing



**Working Range:** 0 to 105 psig at 100°F Maximum 120°F

**Static Burst Pressure:** Over 440 psig at 75°F

**Color:** Solid: Black  
Translucent: Blue, clear, green, red

**Lengths Available:** 50' and 500'

**Bend Radius:** 7/8"

**Note:** Designed for use with push-in fittings.

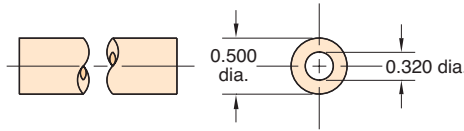
**Note:**

Specify color on order, and use full product number (including code letters for color) as shown in Price List. If no color is specified, clear will be furnished.

## URT1-1610-CLT-□



1/2" O.D. 95A Polyurethane Tubing  
Flexible, durable ether based tubing



**Working Range:** 0 to 105 psig at 100°F Maximum 120°F

**Static Burst Pressure:** Over 420 psig at 75°F

**Color:** Clear

**Lengths Available:** 50' and 500'

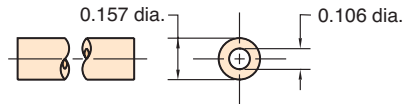
**Bend Radius:** 1 1/8"

**Note:** Designed for use with push-in fittings.

## PET1-0503-□-□



5/32" O.D. 50D Polyethylene Tubing  
Linear low density tubing



**Working Range:** 0 to 105 psig at 100°F Maximum 120°F

**Static Burst Pressure:** Over 540 psig at 75°F

**Colors:** Solid: Black or Natural

**Lengths Available:** 50' and 500'

**Bend Radius:** 1/2"

**Note:** Designed for use with push-in fittings.

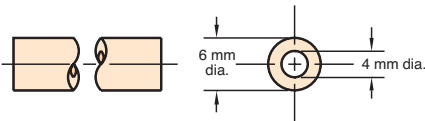
**Note:**

Specify color on order, and use full product number (including code letters for color) as shown in Price List. If no color is specified, natural will be furnished.

## PET1-0604M-□-□



6 mm O.D. 50D Polyethylene Tubing  
Linear low density tubing



**Working Range:** 0 to 105 psig at 100°F Maximum 120°F

**Static Burst Pressure:** Approximately 560 psig at 75°F

**Colors:** Solid: Black or Natural

**Lengths Available:** 50' and 500'

**Bend Radius:** 1 1/4"

**Note:** Designed for use with push-in fittings.

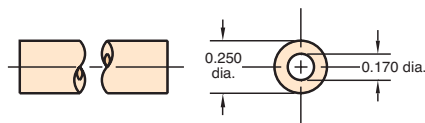
**Note:**

Specify color on order, and use full product number (including code letters for color) as shown in Price List. If no color is specified, natural will be furnished.

## PET1-0805-□-□



1/4" O.D. 50D Polyethylene Tubing  
Linear low density tubing



**Working Range:** 0 to 105 psig at 100°F Maximum 120°F

**Static Burst Pressure:** Approximately 480 psig at 75°F

**Colors:** Solid: Black or Natural

**Lengths Available:** 50' and 500'

**Bend Radius:** 1 1/4"

**Note:** Designed for use with push-in fittings.

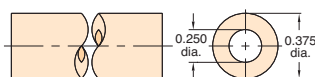
**Note:**

Specify color on order, and use full product number (including code letters for color) as shown in Price List. If no color is specified, natural will be furnished.

## PET1-1208-□-□



3/8" O.D. 50D Polyethylene Tubing  
Linear low density tubing



**Working Range:** 0 to 105 psig at 100°F Maximum 120°F

**Static Burst Pressure:** Approximately 600 psig at 75°F

**Colors:** Solid: Black or Natural

**Lengths Available:** 50' and 500'

**Bend Radius:** 2"

**Note:** Designed for use with push-in fittings.

**Note:**

Specify color on order, and use full product number (including code letters for color) as shown in Price List. If no color is specified, natural will be furnished.





## CLIPPARD CLAMPS

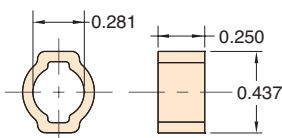
### 5000-1



#### Quick Set Hose Clamps

**Type:** Zinc plated steel

**Use:** 5000-1 with Buna N hose twin vinyl hose



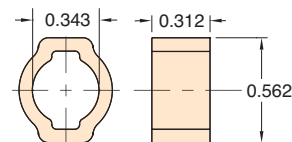
### 5000-1A



#### Quick Set Hose Clamps

**Type:** Zinc plated steel

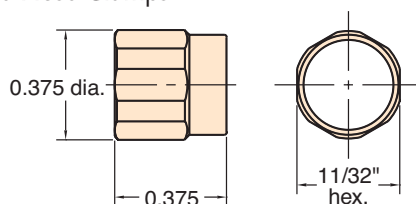
**Use:** 5000-1A with braided hose



### 5000-2



#### Reusable Hose Clamps



**Material:** Brass, self-threading, reusable

**Use With:** 11765 Buna-N hose VYH1-0804-CLT vinyl hose and Clippard hose fittings

**Installation:** Slip sleeve over hose, push onto fitting, then screw into place; tighten with wrench

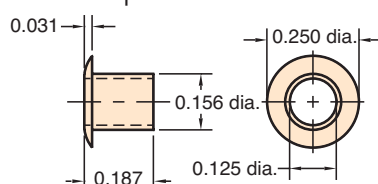
**Options:** (-ENP)



### 5000-4



#### Press-On Hose Clamp



**Material:** Brass, press-on hose clamp

**Use:** for VYH1-0402-CLT hose 1/16" I.D. vinyl

**Installation:** Simply place hose clamp over hose with flange end out; then press hose partially onto fitting, then slide clamp back toward fitting to secure

**Options:** (-ENP)



### Polyethylene vs Vinyl vs Polyurethane

Polyurethane offers a wider range of chemical compatibility than Vinyl, it may be used at much higher temperatures and clamps are not needed when used with barb fittings. Linear low density polyethylene offers a lower cost alternative to polyurethane and superior environmental stress crack resistance over standard polyethylene. Both polyurethane and polyethylene are FDA approved.

### Typical Hose & Tubing Bend Radii

When using hose or tubing, care should always be taken to avoid sharp bends to prevent compressing the inside diameter of the hose or tubing and restricting flow. For extremely close connections, allow a short loop of hose to avoid crimping.

Clippard Hose & Tubing		I.D.	O.D.	Min. Bend Radius
3811-1-RL	Copper Tube	1/16"	1/8"	3/8"
NYT1-XXX	Nylon Tubing	3/32"	1/8"	3/8"
VYH1-XXX	80A Duro. Vinyl Hose	1/16"	1/8"	3/8"
VYH1-XXX	80A Duro. Vinyl Hose	1/8"	1/4"	1/2"
VYH2-XXX	Dual Vinyl Hose	1/8"	1/4"	1/2"
URH1-XXX	85A Duro. Polyurethane Hose	1/16"	1/8"	3/16"
URH8-XXX	Ribbon 85A Duro. Polyurethane	1/16"	1/8"	3/16"
URH1-XXX	85A Duro. Polyurethane Hose	1/8"	1/4"	3/8"
URH2-XXX	Dual 85A Duro. Polyurethane	1/8"	1/4"	3/8"
URH8-0804-XXX	Ribbon 85A Duro. Polyurethane	1/8"	1/4"	3/8"
URT1-0503-XXX	95A Duro. Polyurethane Tubing	3/32"	5/32"	3/8"
URT1-0604M-XXX	95A Duro. Polyurethane Tubing	4 mm	6 mm	1/2"
URT1-0805-XXX	95A Duro. Polyurethane Tubing	0.160"	1/4"	1/2"
URT1-0805M-CLT	95A Duro. Polyurethane Tubing	5 mm	8 mm	3/4"
URT1-1208-XXX	95A Duro. Polyurethane Tubing	0.245"	3/8"	7/8"
URT1-1610-XXX	95A Duro. Polyurethane Tubing	0.320"	1/2"	1 1/8"
PET1-0503-XXX	50D Duro. Polyethylene Tubing	0.106"	5/32"	1/2"
PET1-0604M-XXX	50D Duro. Polyethylene Tubing	4 mm	6 mm	1 1/4"
PET1-0805-XXX	50D Duro. Polyethylene Tubing	0.170"	1/4"	1 1/4"
PET1-1208-XXX	50D Duro. Polyethylene Tubing	1/4"	3/8"	2"