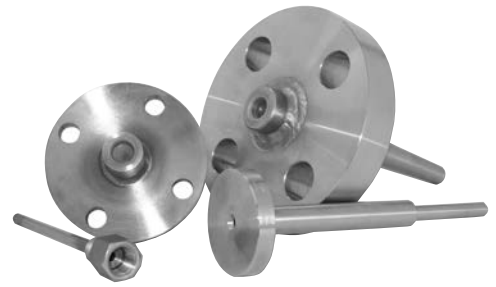


To isolate, protect the sensing element, and permits removal of instruments, CITEC provides all types of thermowells : threaded, flanged or for welding as well as sanitary type in fabricated or barstock versions

Thermowells

. Material	AISI 316L stainless steel, monel 400, hastelloy C276, other on request
. Type	fabricated or barstock
. Instrument connection	BSP or NPT
. Process connection	. BSP or NPT . flange according to ASME, EN, DIN, JIS, ISO... . for welding
. Bore geometry	cylindrical or conical



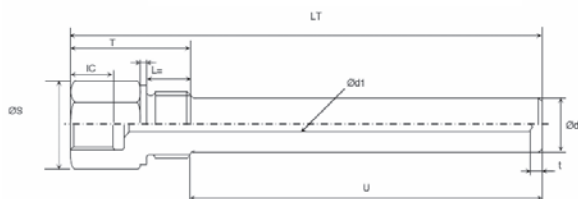
To determinate a thermowell, fill the following table :

Specifications	Definition	To complete
. Thermowells material	material type : AISI 316L, monel 400...	
. Type	fabricated (welded) or barstock	
. Instrument connection	Z : BSP, NPT, other	
. Process connection threaded, flanged or welded	with flange : precise type (ASME, EN1092-1, ...)	
. Threaded connection	H : BSP, NPT, other	
. Thermowells to weld	precise Ø to weld	
. Total length	LT (mm)	
. Connection length	T (mm)	
. Insertion lenght	U (mm), length under thread or under flange	
. Inside and outside diameters	Ø d1 and Ø d (mm)	
. Thermowell geometry	cylindrical or conical	
. Stopper and chain	with or without	
. Drawing	drawing supplied : yes-no	
. Other		

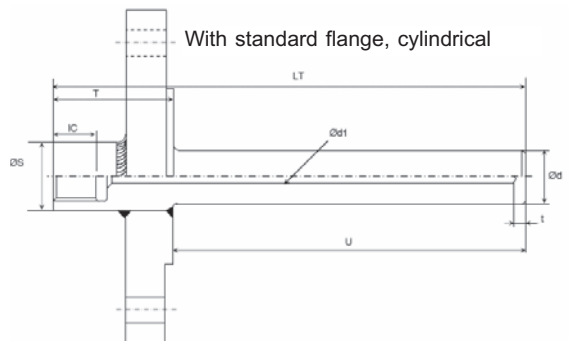


Thermowells models

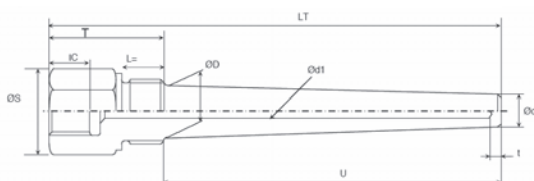
Threaded male-female, cylindrical



With standard flange, cylindrical



Threaded male-female, conical



For welding, conical

